

Product Catalogue

Electrical Bonding Systems,
equipment and materials
for the Railway Industry



ISO 9001 Certified
ISO 14001 Certified

Safetrack connecting the world since 1988



Safetrack Baavhammar AB

Established 1988 outside of Malmö, Sweden.

We are the leading manufacturer of electrical connection systems for Railways, Grounding and Cathodic Protection Industry. These methods are distributed in over 70 countries world wide.

With systems such as PinBrazing, SafePlug®, SafeBond® & SafeGrip™, we supply all of the modern cable application methods to our clients. We also have a complete assortment of railway tools & equipment.

Policy

Safetrack's overall goal is for customers, authorities and employees to have confidence in our organization and our products. This is achieved through continuous improvement of:

- Develop new products that meet the customers' requirements, their own requirements and applicable regulatory requirements and take into account the environmental impact that the products generate
- Be able to guide customers when selecting equipment and component
- Manufacture in an ergonomic work environment, safe and rational way, without errors occurring and that resource consumption is adapted to the needs. Sorting waste so that as much as possible can be recycled and prevent possible pollution
- Perform service assignments on products obtained that ensure continued function and reliability

Fulfill customer requirements regarding timely deliveries and that the business meets applicable regulatory requirements.

Strive for zero accidents and minimal risk of ill-health both for own staff and for end users.

Safetrack should be perceived as a flexible partner that constantly develops the business with the aim of increasing customer satisfaction and reducing the environmental impact.

All employees are involved and are responsible for ensuring that these commitments are realized.

Quality – Tested & Approved

Safetrack material is thoroughly tested by third party, on site and in our own laboratory for corrosion resistance, fatigue tests etc.



ISO 9001 certified
ISO 14001 certified





Pages in digital PDF are clickable shortcuts

2	Safetrack Introduction
3	Table of Contents
4-5	Cable Connection Systems overview
6	Electronic PinBrazing –Fast and reliable cable bonding system
14	SafeBond® –Unique cable bonding system
16	SafePlug® –The new generation of Rail Web Connections
20	Cable Connection solutions for SafePlug® etc.
21	Hardlock Nut –The worlds strongest self-locking nut
22	SafeGrip™ –The Maintenance-free Rail Bond
25	SafeShunt™ –Track Circuit Shunt
26	Protectus™ –Divisible cable protection, 100% recycled plastic
30	Cable Protection, Railway Equipment
31	Insulated Clip Tools & Track Tools
32	Rail Skids / Wheel Chocks
33	Crimping Tools
34	Signalling Equipment
35	Signalling Equipment & Track Switch Brooms
36	Heating Equipment
37	Welding Accessories / Screens / Tents
38	Work Tents / Umbrellas
39	Safety Barriers
40	Railway Scooters & Trolleys
41	Personal Safety



Scan to browse the product categories on our website

Electronic PinBrazing

Fast and reliable cable bonding system



Scan the QR code to open our digital brochure for Electronic PinBrazing or browse to [page 6](#) for more information

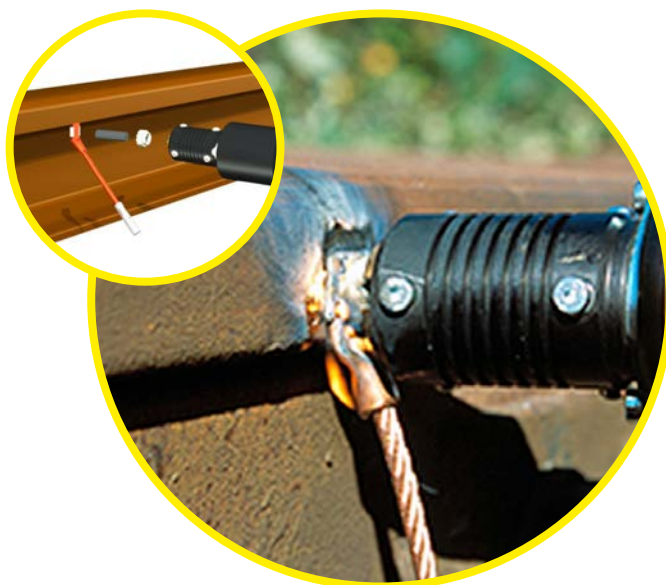


SafeBond®

Unique cable bonding system with no metallurgical impact



Scan the QR code to open our digital brochure for SafeBond® or browse to [page 14](#) for more information



SafePlug®

The new generation Rail Web Connections



Scan the QR code to open our digital brochure for SafePlug® or browse to [page 16](#) for more information

SafeGrip™

The Maintenance-free Rail Bond



Scan the QR code to open our digital brochure for SafeGrip™ or browse to [page 22](#) for more information



Electronic PinBrazing

Fast and reliable cable bonding system



Safetrack® patented electronic PinBrazing system is an extremely efficient, low temperature arc brazing method used for attaching electrical connectors to steel structures such as rails, without the need for drilling holes or welding. It is ideal for connecting cables for signaling, grounding and return/power but can also be used for connecting heat elements and cable clips.



Check out our video!

A demonstration on how fast and efficient you can connect your cables.

ECONECT®

– a whole new level of performance.

- **High capacity**
60 brazings per charge
1h Recharge
- **Battery powered**
Nano Li-Ion, long life
and lead-free
- **Digitized**
Same perfect brazing
result everytime (patent)
- **Lightweight**
Only 9,8 kg (21,6 lb)
- **Automatic Gun**
Self adjusting (patent)
- **Prepared for SafeBond®**(patent)
- **Part no. 94350**
Cpl. set with grinder
Add charger:
8048 (for 110–230V)
80561 (for car use)



S30 X/C

Electronic PinBrazing equipment

- 40–60 brazings per charge
- Constant Energy (patent)
- Automatic Brazing Gun (patent)
- Rail wheels & Tool box can be fitted
- **Part no. 9307** Cpl. set with grinder
Add charger 8049 (for 110–230V)
or 8055 (for car use)



S300

Electronic PinBrazing equipment

- For use with a welding inverter, no batteries
- Unlimited capacity
- Constant Energy (patent)
- Automatic Brazing Gun (patent)
- **Part no. 93807** (Add inverter RW674010 & grinder 593070)



S101

Electronic PinBrazing equipment

- 100 brazings per charge
- Constant Energy (patent)
- Automatic Brazing Gun (patent)
- Insulated rail & rubber wheels
- **Part no. 9060** Cpl. set with grinder
Add charger 8049 (for 110–230V)
or 8055 (for car use)



S4

Automatic PinBrazing Gun
Use with S30 X/C & S101

- **Part no. 9102** incl. cable package



S15

Automatic PinBrazing Gun
Use with Econect & S300

- **Part no. 91015** incl. cable package



Angle Gun

For PinBrazing in crossings

- **Part no. 910151** f. Econect & S300
- **Part no. 91035** f. S30 X/C & S101

PinBrazing Accessories



Chargers for PB/SB Units

- 8048 110–240V charger Econect
- 8049 110–240V charger S30 X/C
- 8055 Car charger S30 X/C
- 80561 Car charger Econect



Cordless Grinder 18V

- Complete with 2 batteries & 230V Charger
- 593070



Grinding Material

- 8025 Grinding Pin
- 8014 Carbide Burr
- 8014XL Extended Carbide Burr



Monti Bristle Blaster

- Blaster/cleans without grit
Complete with bag & 10 wire brushes
- 8007040



Grounding Magnet

- Powerful, Switchable
Complete device with cable
- 80730



Grounding Grip

- For non-magnetic material
No need to grind first
- 8071



Carrying Harness

- For Econect
Complete with holster
- 93690



Handy

- Cart for S30 X/C
Rail wheels + tool box
- 9361



Insulation Bag

- For Econect
Increased capacity in even colder weather
- 937005



Tool/Accessories Case

- Does not include tools/accessories
- 95240



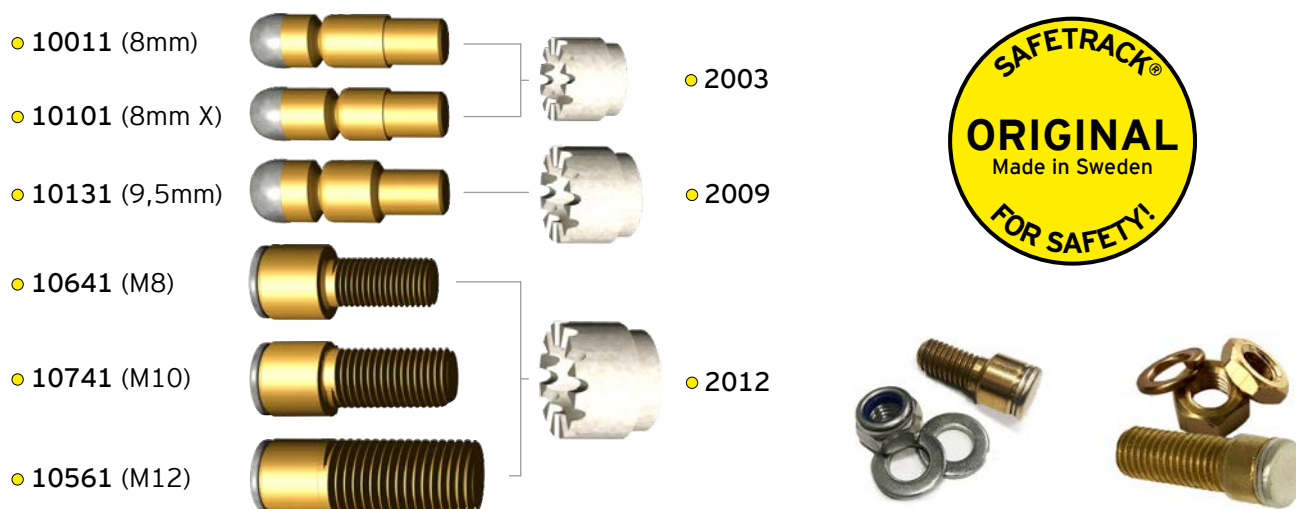
Hole Punch Tool

- Re-use faulty or used bonds
- 8001 for Ø8 mm
 - 8002 for Ø9,5 mm



Extension Cables

- 5 Meter
- 9235 for S4 gun (S30 X/C)
 - 9235-S15 for S15 gun (Econect)
 - 9237-02 for ground (all units)



Part no.	Description	L=Thread length (mm)	Qty/pack	Notes	Ceramic Ferrule	Use Pinholder	Use Ringholder
For electronic pinbrazing equipment (brazing pin without fusewire)							
10011	8mm Standard		100		2003	9211	9202
10101	8mm Extra Silver		100		2003	9211	9202
10131	9,5mm		100		2009	9211	9202
Threaded brazing pins for electronic pinbrazing equipment (metric thread)							
10641	M8 Threaded	L=16mm	50	Incl. 100pcs washers & 50pcs locknuts	2012	9213	9204
10741	M10 Threaded	L=24mm	50	Incl. 50pcs spring washer & 100pcs nuts	2012	9215	9204
10561	M12 Threaded	L=24mm	50	Incl. 50pcs spring washer & 100pcs nuts	2012	9217	9204

Pin & Ring Holders



Ring Holders

- 9202 for 8–9,5 mm pin
- 9204 for M8–M12 threaded pin



Pin Holders

- 9211 for 8–9,5 mm pin
- 9213 for M8 threaded pin
- 9215 for M10 threaded pin
- 9217 for M12 threaded pin



Extended Pin & Ring Holders

- PinBrazo in narrow spaces
- 9227 for 8–9,5mm pin
 - 9229 for M8–M12 threaded pin

Rail Bonds for PinBrazing

Rail Bonds

Safetrack Rail Bonds are made of highly flexible wire to withstand vibrations in the rail. The cable lugs in both ends are specifically made for PinBrazing. Our unique design of the cable lugs ensures that the wire in the cable is brazed to the rail. This design gives the lowest possible transition resistance.



Y-Bonds

Safetrack Y-Bonds are made with the same highly flexible wire as our standard Rail Bonds. The Y-Bonds are used when you need to be able to exchange a cable connection easily.



Extension Bonds

Safetrack Extension Bonds are made with the same highly flexible wire as our standard Rail Bonds. The Extension Bonds are used when you need to crimp a wire to a pinbrazed connection.



All our bonds can be made in almost any length and size.

T-Connectors

T-Connectors are used when a disconnectable bond is needed. They consist of a copper plate on which a thread is brazed. Each plate is retained by two or four brazing pins and allows larger (up to 300mm²) cable sizes to be used. It takes no more than 1–2 minutes to braze the largest T-Connector including time for grinding and grounding.



Octopus Bonds

Octopus Bonds are used when you need to connect a larger cable to an Extension Bond. They consist of several bonds connected to a sleeve for easy attachment of a larger cable.



Fishplate Bonds

The Fishplate Bonds are used when connecting two pieces of rail through a railway joint.



Cable Lugs

Safetrack Cable Lugs are specially made for PinBrazing. They are made for crimping cables in sizes from 10 mm² up to 110 mm². Smaller cables (down to 2,5 mm²) can be connected with a Safetrack Terminal Sleeve. Use Safetrack crimping tools to ensure the best contact.



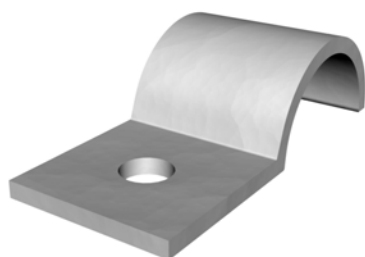
PinBrazing Clamps

Safetrack PinBrazing Clamps are used for mounting electric point heaters on the rail or for fixing cables. Since they are made of annealed copper, you can bend the clamps during the fitting/removal of cables or electric heaters. When the space is cramped and where the standard Brazing Gun have trouble reaching, we recommend the use of an extension set or angled brazing gun.



Fixing Clamps

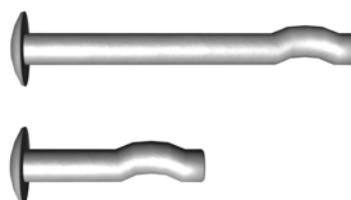
Safetrack Fixing Clamps are specially made for railway and heavy duty use. They are made of acid proof stainless steel. Fixate with screw and plug or simply with spikes.



Available in sizes between
Ø 6 – 30 mm

Spikes

A simple and quick method for fixating in concrete, brick or stone. Just drill the hole and hammer in the spike. No aging plastic plugs.



Available in sizes between
4,8x25 – 4,8x115

Galvanized Steel

Theft of copper cables is today a major problem for railways worldwide. Therefore many railways are using Safetracks Theft Deterrent steel railbonds for their signal bond installations.

The Steel Rail Bonds are highly flexible and made of soft annealed wires to withstand vibrations in the rail. The cable lugs in both ends are specially made for PinBrazing. Our unique design of the cable lugs ensure that it is the wires in the cable that is brazed to the rail. This design gives the lowest possible transition resistance.

Galvanized Steel Rail Bonds for PinBrazing can be made in different lengths and sizes.



SafeCable®

Safetracks new unique Theft Deterrent Copper-Steel Cable

The unique SafeCable® is made of soft annealed steel wires, to make it as flexible as possible to withstand vibrations in the rail. The steel and copper are metallurgically bonded together. The copper on the outside ensure good contact when crimping sleeves with the cable. The electrical conductivity is 55% of the same size of a copper cable.

The cable is magnetic which means that thieves who checks with magnets for copper avoid stealing the cable but if they anyway try to cut it they find it hard to cut and a great disappointment waiting for them at the recycling companies.

The cable has no scrap value!

SafeCable® Rail Bonds for PinBrazing can be made in different lengths and sizes.



Metallurgically bonded
copper and
soft annealed steel

SafeBond®

Unique cable bonding system
with no metallurgical impact



Safetrack® patented SafeBond® system is a unique, low temperature indirect arc brazing method used for attaching electrical connectors anywhere on the rail without the need for welding or drilling. SafeBond® has no metallurgical impact on the rail and has an extremely low transition resistance, thanks to the silver brazing technology.

Silver has the lowest transition resistance of all metals.



Visit our SafeBond® page
The process and the important advantages of SafeBond®

ECONECT®

– a whole new level of performance.

- **High capacity**
30 connections per charge
1h Recharge
- **Battery powered**
Nano Li-Ion, long life
and lead-free
- **Digitized**
Same perfect connection
result everytime (patent)
- **Lightweight**
Only 9,8 kg (21,6 lb)
- **Automatic Gun**
Self adjusting (patent)
- **Can also be used for PinBrazing**
- **Part no. 94355**
Cpl. set with grinder
Add charger:
8048 (for 110–230V)
80561 (for car use)



S300

SafeBond® Brazing unit

- Requires welding inverter, no batteries
- Unlimited capacity
- Constant energy
- Automatic Brazing Gun (patent)
- Weight: 6,5 kg
- **Part no. 93900**
Add welding inverter RW674010 & grinder 593070

Consumables



Accessories



- Grounding Magnet**
Powerful, Switchable
Complete device with cable
- **Part no. 80730**



- Grounding Grip**
For non-magnetic material
No need to grind first
- **Part no. 8071**



- Insulation Bag (Econect)**
Increased capacity in
even colder weather
- **Part no. 937005**



- Carrying Harness (Econect)**
Offload your arms
Complete with holster
- **Part no. 93690**

SafePlug®

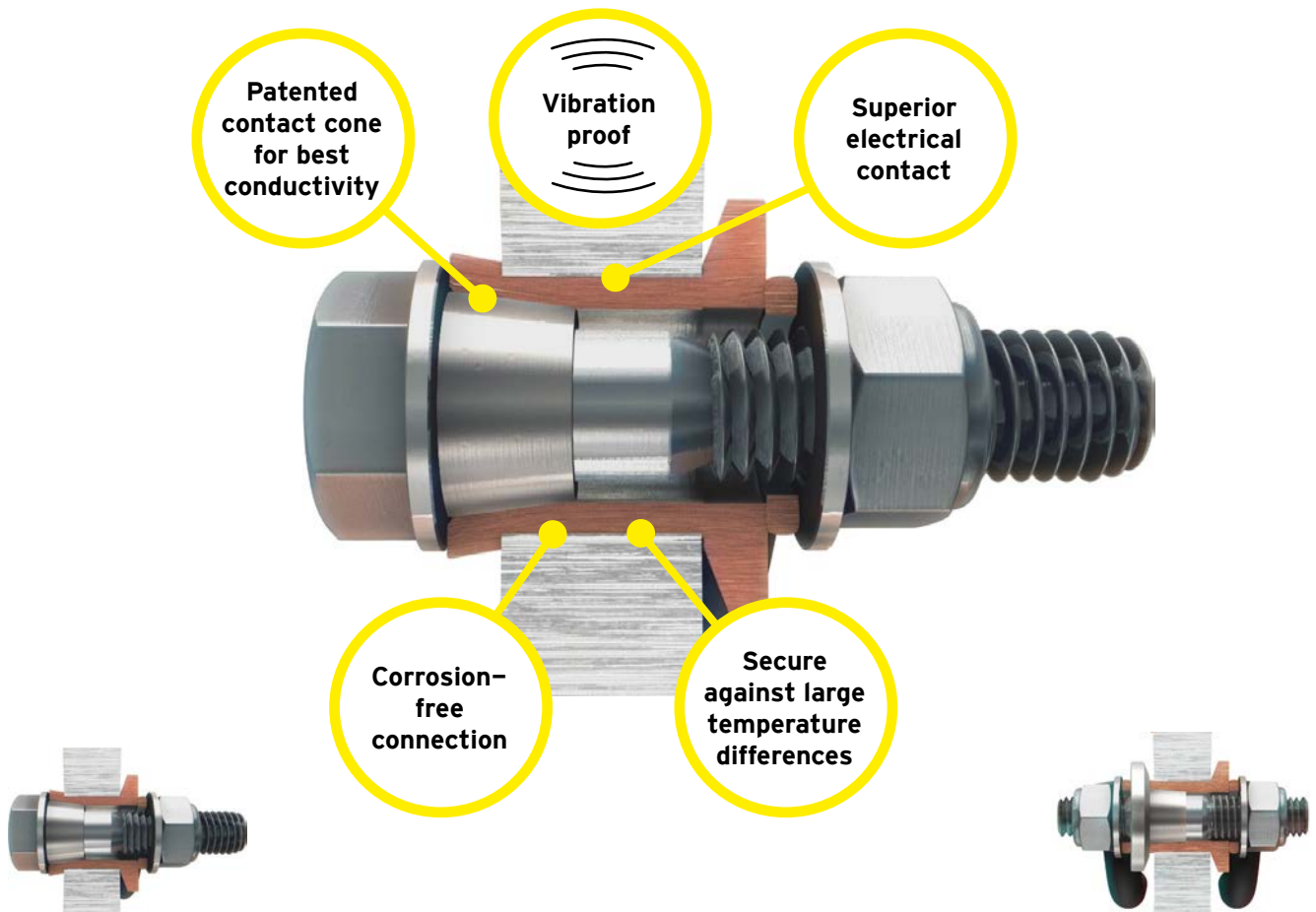
The new generation Rail Web Connections



Safetrack® patented SafePlug® is the new generation of rail web connections with optimal performance. SafePlug® is developed to obtain as low transition resistance as possible between the cable lug and rail. The patented contact cone allows a much greater contact pressure and maintains the pressure to withstand vibrations in the rail even in large temperature changes. The electrical interfaces and contact surface become also much larger thanks to this design.



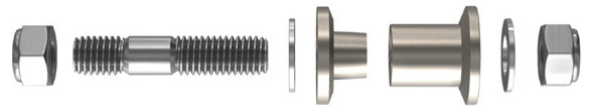
Visit our SafePlug® page
The process and the important advantages of SafePlug®



SafePlug® Basic



SafePlug® Combi for multiple cables



Dimension	Part No.	Drill Ø mm	Web size mm	Tool
M6	59027BD	8 mm	13,5-15,5 mm	59104BD
M6	59028BD	8mm	16-17,5	59104BD
M10	59023BD	13,5 mm	12-16,5	59102BD
M10 Combi	590260BD	13,5 mm	12-16,5	59102BD
M10 Switches	59024BD	13,5	30-32mm	59102BD2
M12	59021BD	19 mm	12-16,5	59101BD
M12 HT high torque	59031BD	19 mm	12-16,5	59101BD
M12 Combi	590225BD	19 mm	12-16,5	59101BD
M12 Ø22 mm	590211BD	22 mm	13,5-17,5	59106BD
M12 Ø22 mm	590212BD	22 mm	18-22 mm	59106BD
M12 Ø22 mm Combi	590230BD	22 mm	13,5-17,5	59106BD
M14	59038BD	28.5 mm	12-16,5	59108BD
M16	59018BD	22mm	12,5-16,5	59103BD
M16	59019BD	22mm	18 - 22 mm	59103BD
M16 Combi	59014BD	22mm	12,5-16,5	59103BD

Rail-Line Core Drill

Carbide annular cutters with optimally angled, specially treated Sandviken teeth



ø19 mm ● Part no. 59RLK19R
 ø22 mm ● Part no. 59RLK22R
 ø33 mm ● Part no. 59RLK33R

Blue-Line Rail Core Drill

Powder steel with patented Durablue coating for the hardest surface drilling



ø19 mm ● Part no. 59SBK190
 ø22 mm ● Part no. 59SBK220
 ø33 mm ● Part no. 59SBK330

Drill-Line Rail Twist Drill

Powder steel with patented Durablue coating for the hardest surface drilling



ø13,5 mm (d. 30 mm) ● Part no. 59SBW135
 ø13,5 mm (d. 40 mm) ● Part no. 59SBW136



Assembly Tool

M6 ● Part no. 59104BD
 M10 ● Part no. 59102BD
 M12 ● Part no. 59101BD
 M16 ● Part no. 59103BD



Hole Gauge / Counterhold

M10/M12 ● Part no. 591085
 M6 ● Part no. 59106400



Torque Wrench

Analogue 40–200 Nm ● Part no. 59106
 Digital 20–100 Nm ● Part no. 59106305
 Digital 40–200 Nm ● Part no. 59106310



Chamfering Tool 25mm

● Part no. 59104



Super Drilling Paste

Friction-modifying special drilling paste
No more heavy coolant bottles

● Part no. 59579



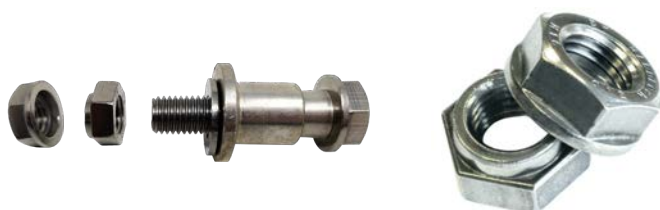
Magnetic Swarf Wand

Removes your drilling chips like magic

● Part no. 59104020

Hardlock Self-Locking Nut

The convex fixing nut is locked in place with the concave locking nut. The Hardlock Nut will stay intact through heat, high power throughput and the most severe vibrations. SafePlug® not included.



Scan for more
SafePlug® Accessories



Rail Drilling Machine TFR 130P (Petrol)

Safetrack TFR 130 P is a lightweight and easy maneuverable rail drilling machine. It is equipped with a 4-stroke Honda engine and is able to drill quickly and accurately in any vignola or tram rails.

- Lightweight – only 17,8 kg
- Easy clamp system and quick changing of rail profile
- Even power distribution
- Adjustable hole centre locator
- Part no. 5952000



Rail Drilling Machine TFR 130B (Battery)

Safetrack TFR 130 B is a lightweight and easy maneuverable rail drilling machine. It is equipped with a powerful electric engine and is able to drill quickly and accurately in any vignola or tram rails.

- Same advantages as TFR 130P (above) + following:
- Battery driven (separate battery pack) electric engine
- Up to 100 holes in one charge
- Only 14 kg (without battery pack)
- Part no. 5952010



Battery pack



Rail Drilling Machine ST.33 (Battery)

A lightweight machine with the fastest clampsystem in the world. Quick exchange of the supplied rail profile models. Suitable for drilled cable connection attachment.

- Fast and easy to operate attachment
- Up to 30 holes per charge
- Up to Ø33 mm hole size
- Weight 18 kg (with battery)
- Part no. 5952400



Electric Rail Drilling Machine (230V)

A powerful, lightweight and userfriendly electric rail drill. The multi-form templates are a faster, easier and more accurate system across the spectrum of rail forms simplifying track laying and maintenance work on railways and urban tramways all over the world.

- 230V
- 1100 W
- Multi-form templates
- Weight 16 kg
- Part no. 5953RB



Switch Blade Drilling Machine (230V)

A powerful electric drilling machine for drilling in switch blades for new fresh holes for the switch rod. Special clamp system with quick attachment for switch points. Light, easy to mount with no loose parts. Powerful with variable speed.

- 1100 W
- Speed 350-600 rpm
- Quick attachment for switchpoints
- Weight 19 kg
- Part no. 5955RB

Ultra Flexible Extension Bond

The cable in our ultra flexible Extension Bond is made of multi-stranded, electrically tin-plated copper wire. This bond is used when you need a flexible connection able to withstand high power throughput and the toughest vibrations.

Available in sizes from 35 mm² up to 95 mm².

Also sold as a bare wire without lugs or sleeves.



Theft defending High Torque Aluminium Rail Bonds

Safetrack special range of aluminium grounding rail bonds and connectors are designed with a unique high torque aluminium cable lug that allows a torque moment of 80Nm.

This is 60% higher torque than standard aluminium cable lugs and therefore withstands the vibrations in the rail on a much higher level.

The product range has been tested and approved according to DB electrical and mechanical requirements.

Factory made rail bonds and connectors available in any length.



Safetrack Aluminium Rail Bonds consists of:

Aluminium High Torque Terminals

- Tin plated surface to assure a good corrosion resistance
- Two stud holes available; M12 and M16
- Torque moment tested at 80 Nm ensuring a perfect installation even with high vibration levels
- Short circuit current (75 mm² = 25 kA 100 ms) (110 mm² = 40 kA 100 ms)



BayEnergy® Theft Defence Cables

- Light weight – Aluminium
- Simple handling
- Optical marking of the cable by 2 blue strips
- UV-resistant
- Available in the following versions:
 - Aluminium
 - Aluminium with steel wire
 - in 75, 100 and 110 mm²



Hardlock – The Worlds Strongest Self-Locking Nut!

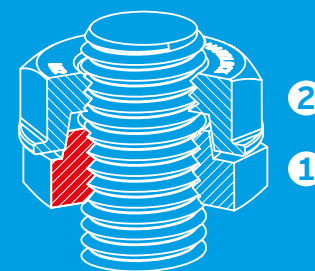
The Hardlock Nut will stay intact through heat, high power throughput and the most severe vibrations. Japanese Railways have specified Hardlock Nuts for more than 40 years. In the UK, Network Rail have specified Hardlock Nuts for over 10 years, with new applications being added to all the time.

- A better fastener because it resists loosening by vibration
- Easy to fit - Combines the benefits of a free-fitting nut and a self-locking nut
- Reduced inspection and maintenance time
- Reusable - Can be fitted after removal, saving time and money

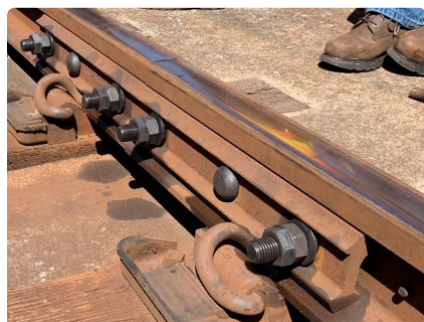


How does the Hardlock Nut work?

Hardlock Nut consists of a (1) Convex "fixing" Nut that has a truncated protrusion arranged off-center on the upper part, the (2) Concave "locking" Nut is designed with a concentric conical depression for locking the two nuts together. By tightening the concave nut onto the convex nut, a strong perpendicular load will be applied to the bolt from both sides. Due to the strong locking force created by the Wedge of the Hardlock Nut, no matter if it is exposed to severe vibrations and/or impacts the Hardlock Nut will stay intact.



What is required to fit the Hardlock nut on Fish Plates?



- (Optional) Power tool for faster installations, capable of achieving torque close to specified level
- 2X Double depth sockets
- Manually calibrated torque wrench
- Two persons to perform operation efficiently

Applications for Hardlock nut



Energy / Power

Wind Power
Solar Power
Thermal Power
Nuclear Power



Mining & Earth Moving

Processing Machinery
Heavy Machinery
Freight Railway



Railways

Power
Signal
Track
Construction



Roads

Bridges
Highways
Vehicles



Construction

Machinery
High-rise Buildings
Pylons

SAFEGRIP™

The Maintenance-free Rail Bond



SafeGrip™ is used as a stationary or temporary connection of cables to the rail. It can also be used as a temporary connection between rails while rails are being changed. One size fits several different rail profiles. SafeGrip™ does not need to be adjusted or tightened after a period. The special Swedish spring steel makes sure that the screw always keeps a tight pressure against the rail.



Visit our SafeGrip™ page

The simple process and the important advantages of SafeGrip™



Individual Rail Contact Clamp without cable

Type A



Type B



Type C



Part no.	For cable size (mm ²)	Connection to cable	Foot width (mm)	Fits rail size	Color	Type	Note
7019	up to 50 mm ²	M8	120-140	50 kg	Red	A	Cable on R side
7078	up to 50 mm ²	M8	139,5-150	UIC 60	Yellow	A	Cable on R side
707805	up to 50 mm ²	M8	125-150	50-60 kg	Yellow	A	Cable on R side
707807	up to 50 mm ²	M8	125-150	50-60 kg	Yellow	A	Lockable R use w. 7012
701919	up to 50 mm ²	M12	120-140	50 kg	Red	A	Cable on R side
707806	up to 50 mm ²	M12	125-150	50-60 kg	Yellow	A	Cable on R side
707808	up to 50 mm ²	M12	125-150	50-60 kg	Yellow	A	Lockable R use w. 7012
7003	up to 150 mm ²	Stripped bare wire	120-140	50 kg	Red	B	Cable on R side
7004	up to 150 mm ²	Stripped bare wire	139,5-150	UIC 60	Yellow	B	Cable on R side
70040002	up to 150 mm ²	M12	125-150	50-60 kg	Yellow	C	Cable on R side
70040004	up to 150 mm ²	M12	125-150	50-60 kg	Yellow	C	Cable on L side
70040210	up to 150mm ²	½"	125-150	50-60 kg	Yellow	C	Lockable R use w. 7012

Rail Contact Clamp complete with cable



Type D



Part no.	Area (mm ²)	Length (mm)	Foot width (mm)	Fits ~rail size	Color
7135	25	1560	100-125	35 kg	Yellow
7082	25	1560	120-140	50 kg	Red
708686	25	1560	125-150	50-60 kg	Yellow
7086	25	1560	139,5-150	UIC 60	Yellow
7230	25	3000	125-150	50-60 kg	Yellow
7240	50	1000	125-150	50-60 kg	Yellow
7242	50	1200	125-150	50-60 kg	Yellow
7241	50	1400	125-150	50-60 kg	Yellow
7246	50	1600	125-150	50-60 kg	Yellow
7245	50	1700	125-150	50-60 kg	Yellow
7265*	50	1650	-	Bullhead	TCOD/Red
7239*	50	1650	125-150	50-60 kg	TCOD/Yellow
7238*	50	1930	125-150	50-60 kg	TCOD/Yellow
70752	50	20 000	125-150	50-60 kg	Yellow
7257	95	1000	125-150	50-60 kg	Yellow
7260	95	1600	125-150	50-60 kg	Yellow

Other lengths available upon request.

* UK Network Rail Approved!

TCOD Delivered with locking bolt and extra insulation as standard.
Locking key (SAFE 7012) not included.



Bag

- Part no. 7008

With velcro strap for temporary bonds and TCOD



Locking Key

- Part no. 7012

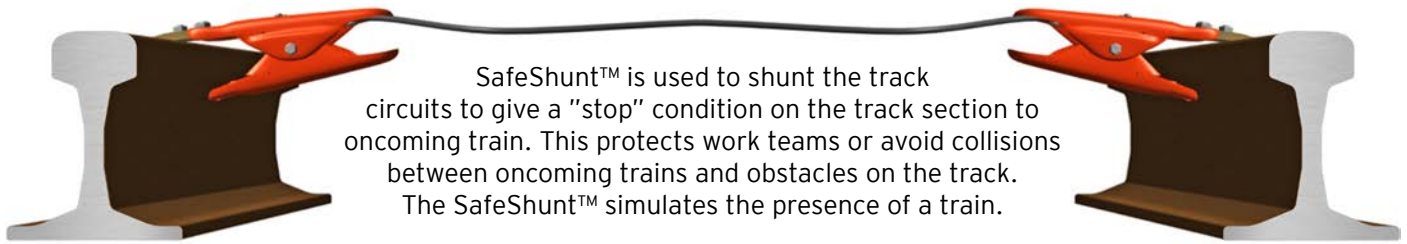
Wrench/Locking key for TCOD
L=125mm



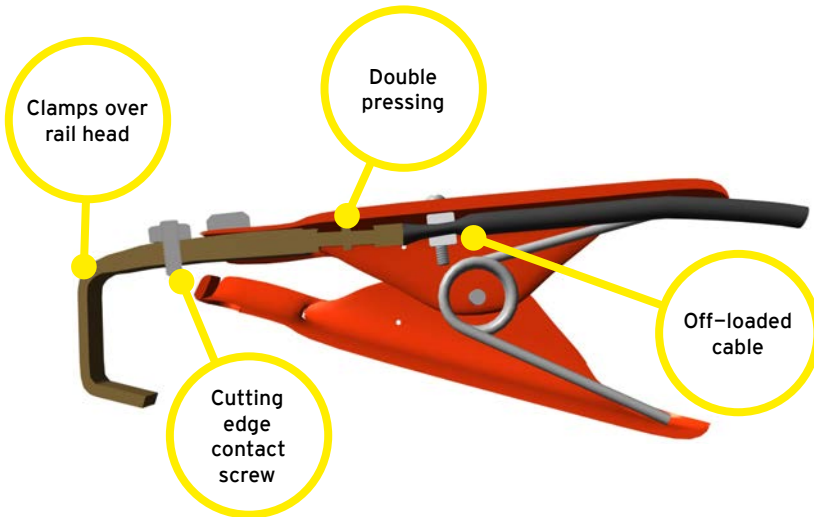
Locking Bolt

- Part no. 7016

Special hardened locking bolt for TCOD



SafeShunt™ is used to shunt the track circuits to give a "stop" condition on the track section to oncoming train. This protects work teams or avoid collisions between oncoming trains and obstacles on the track. The SafeShunt™ simulates the presence of a train.



Technical specification

Cable lug:	Hot pressed brass
Contact screw:	Stainless steel
Cable:	Multi wire 10mm ² copper PVC insulation, red cable as optional
Tong handles:	Orange painted sheet steel
Test	
Voltage:	24 VDC
Voltage drop:	0,032 V
Current:	10 A
Resistance:	0,0031 Ohm

- Will not release by a foot trip, thanks to a smart design
- Cable is double crimped to the clamp secured over the rail head
- Fits most types of rail profiles
- Tongs are easily fitted and have an excellent contact grip
- Orange painted for good visibility
- Lightweight, only 1,4 kg
- Unmatched reliability – 60 years of flawless use of more than 120.000 supplied units

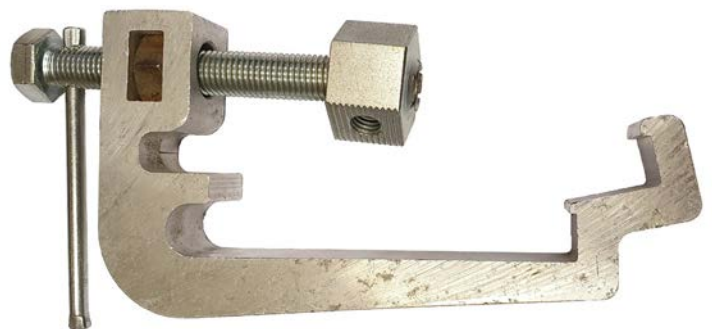
Part no.	Length mm	Note
7033	2450	
7034	1660	
7034b	1660	Extra insulated
7034DK	1860	Yellow/Green cable
70351	1760	
7035b	1760	Extra Insulated

Rail Foot Aluminium Clamp

Suited for connecting the grounding strap to the rail

Used to make a solid connection between the grounding strap and a rail. It consists of an Aluminium rail clamp and an M16 bolt that goes through a drilled hole in the clamp and against the rail. A hexagonal Aluminium piece is mounted on the end of the bolt. The bolt is tightened by hand.

Dimensions LxWxH (excl. bolt): 196x30x103 mm
Weight: 950 g



- Part no. 7231001 (110–125/135–150 mm)
- Part no. 7231010 (110–125/135–150 mm) (Extended)

PROTECTUS™

Divisible cable protection



Protectus, the extremely strong divisible pipe, consist of two halves that is easily locked safely with side-locks in different colors for different cable types. Protectus are made of recycled polyproylene and can be reused many times. 100% recyclable. Available in lengths of 1 meter and in 4 diameters (Ø 60/110/160/217 mm). Side Locks can be custom made with your logo.



Visit our Protectus page
See the advantages of using Protectus for your cable installations

Protectus™

Divisible cable protection



- Extremely strong design. EN61386-24 and SN8 approved
- Does not need to be buried for temporary works
- Withstand pressure of 750N
- No tools. 30-50% faster installation
- Each pipe can be angled in 15° and follow the ground
- Side Locks in different colors. Red, Green, Yellow, Orange, Black For High Voltage, Tele etc
- We can custom print your logo on the Side Locks
- Made from 100% recycled plastic



Panzar™

Divisible subsea cable protection



- Secure and durable protection
- Quick & easy installation, no tools
- Extremely robust construction
- Versatile
- Each pipe can be angled 7°
- Compatible weights 18 - 34 kg
- Made from 100% recycled plastic



Panzar™ is developed in close cooperation with experienced installers and is suitable for use in a wide area of conditions. For subsea installations, our own weights can be mounted in several ways and the construction will make it possible to fasten Panzar™ in rocks. Tool-less installations both in subsea applications as well as above water. The cables are 100% protected at all times.

Quicklock™

Priceworthy divisible cable protection



- Secure and durable protection
- Quick & easy installation, no tools
- Each pipe can be angled 22,5°
- 1.2 meter lengths
- Made from 100% recycled plastic

Quicklock™ is our most affordable cable protection pipe, made from 100% high quality recycled PP-EPDM plastic. Simple and fast installation without any tools will lead to low costs. An innovative design and well-developed locking system offer a safe and reliable protection.

Universal Hub

Multiple connection point



Universal Hub is a product design to solve all sorts of possible joint situations with connectable diameters from 40-220 mm. When using the hub, the cables are protected at all time without any weak spots.

Snap Base™

Suitable for street lights, E/V chargers, park furnishings and signs of various kinds.



No more heavy concrete bases

– Snap Base™ is 100% recycled lightweight plastic

No concrete fill material

– Use existing masses as back fill

Less excavator time

– Snap Base™ can be installed by hand

Snap Base™ 108 mm

Increase the quality and lifespan when installing street lights. Save costs thanks to much less excavator time and more efficient shipping of the products.

The base is designed to withstand the forces of nature, both above and under ground. The integrated wings prevents the base and pole from tilting or turning to ensure a secure installation.

- Powerful, innovative and robust design.
- Resistant to elements such as UV-light, salts and chemicals.
- Manufactured out of 100% recycled plastic - sustainable product.

● **Part no. 36243310**



Technical data

• Pole diameter (mm)	108
• Base height (mm)	900
• Insert depth (mm)	600
• Weight (kg)	12
• Pieces/EU-pallet	8

Snap Base™ 60 mm

Developed to simplify and promote an eco friendly installation of standard 60 mm diameter poles. Suitable for E/V chargers, park furnishings and signs of various kind.

- Powerful, innovative and robust design.
- Resistant to elements such as UV-light, salts and chemicals.
- Manufactured out of 100% recycled plastic - sustainable product.

● **Part no. 36243300**



Technical data

• Pole diameter (mm)	60
• Height (mm)	520
• Insert depth (mm)	350
• Weight (kg)	3,5
• Pieces/EU-pallet	36



Snap Base XL™

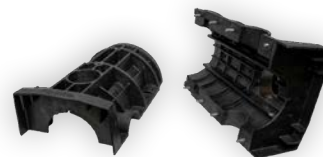
A lightweight base for bigger poles, like flagpoles and billboards. Manufactured out of 100% recycled plastic.

- **Part no. 36243315**



Technical data

- Inner diam. (mm) 330
- Height (mm) 620
- Width (mm) 400
- Length (mm) 400
- Weight (kg) 15,5
- Pieces/EU-pallet 24
- Addon extra (mm) 200



Snap Cable Chamber™

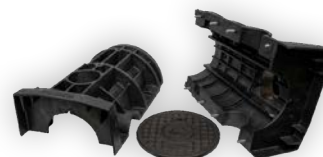
A lifesaver when it comes to attaching clamp meters to the power line. It can be installed during or post cable installation nearby the substation as well as along the cable line to simplify future work on the cable. Manufactured out of 100% recycled plastic.

- **Part no. 36243320**



Technical data

- Inner diam. (mm) 330
- Height (mm) 620
- Width (mm) 400
- Length (mm) 400
- Weight (kg) 24
(of which lid is 8,5)
- Pieces/EU-pallet 24
- Addons (mm) 200
- Indicative pole incl. attachment, height (mm) 1200 or 1800



Snap Anchor™

Developed for anchoring overhead power line poles. With an integrated handle and a considerably lower weight than the competitors, Snap Anchor™ is highly appreciated by the installers. Manufactured out of 100% recycled plastic to meet the high demands on quality and sustainability.

- **Part no. 36243350** (Ø 430 mm)
- **Part no. 36243360** (Ø 640 mm)



Technical data

- | | | |
|--------------------|-----|-----|
| • Diameter (mm) | 430 | 640 |
| • Weight (kg) | 6 | 11 |
| • Pieces/EU-pallet | 54 | 24 |



Varnamo Hose/Cable Ramp

Protect your fire hoseline, pipes and cables!

- Designed for 50 tonne, 110 000 lb!
- The hose or cables are fixed to it
- 8 studs fixates ramp to the ground
- Long life

The overrun protection that withstands the highest axle loads! 8 studs on the underside makes it stable on gravel and asphalt roads without damaging the surface. The bridge has been designed for 50 tonne axle pressure, which makes it a standard equipment for emergency vehicles. The bridge channel has a plate that keeps cables and hoses together which avoids them being crushed under the bridge. Common users are rescue services, companies in industries such as mines, forests, power, construction, railways etc.



Avoid bursting your hose!
Use Varnamo,
the highest quality
hose bridge on the market.

- Part no. 59245050 3" Ø92 mm Dimension: 60 x 60 x 11 cm (24" x 24" x 4"1/3), Weight 22 kg
- Part no. 59245055 4" Ø115 mm Dimension: 60 x 60 x 13.5 cm (24" x 24" x 5"1/3), Weight 27 kg

Husqvarna K 1270 Rail Cutter

Most powerful cutter on the market

Cutting a rail track takes power, precision and speed. The K 1270 Rail is the market's most powerful cutter, customised for railways, tram tracks and metro systems. It cuts fast and straight, the attachment mounts quickly to the rail and the double attachment mountings means you can cut from both sides of the track.

- Easy to start
- Perfect right-angle cuts
- Cut from both sides of the track
- Anti-vibration system



- | | |
|---------------------------|---------------------------|
| • Part no. 58533010 (14") | • Part no. 58533020 (16") |
| Cutting depth max 118 mm | Cutting depth max 145 mm |
| Blade diameter max 350 mm | Blade diameter max 400 mm |
| Output power 5.8 kW | Output power 5.8 kW |

Hydraulic Track Jack

Low profile

The low height, 180 mm from heel to head, makes it possible for trains to pass during operation. Stable operation thanks to the large base.

Capacity:

- Heel 5.000 kg
- Head 10.000 kg
- Lift height 75 mm
- Weight 16 kg
- Height 200 mm



- Part no. 58681060

Rail Clamps

For lifting and transporting rails



- | | | |
|-----------------------------------|------------------------------|------------------------------|
| Grooved Rail
57R1/60R2 | UIC60, BV50 & S49 | UIC60, BV50 & S49 |
| • Part no. 5852600 | • Part no. 5852601 | • Part no. 5852602 |



Panpuller

Manual installation and removal of Pandrol E, P & PR Clips.

● Part no. 96908450



Fast Clip Installer

Manual installation of Pandrol Fast Clips.

● Part no. 96908540



Fast Clip Extractor

Manual Extraction of Pandrol Fast Clips.

● Part no. 96908545



Sleeper Lifter

For use with Pandrol Fast Clips.

● Part no. 96908550



Safety Ladder

For use in chemical/electrical environments

- Glass-fibre-reinforced plastic
- Resistance to ageing
- Complies with EN 131 Professional

● Part no. 96908230 (1,9 m, 6 steps)

● Part no. 96908232 (2,99 m, 10 steps)

● Part no. 96908236 (4,17 m, 16 steps)



Ballast Digging Fork

Tested for 1000V

● Part no. 96908245



Sledge Hammer

Tested for 10000V

● Part no. 96908265



Square Mouth Shovel

Tested for 1000V

● Part no. 96908310



Railroad Pick

Tested for 1000V

● Part no. 96908390

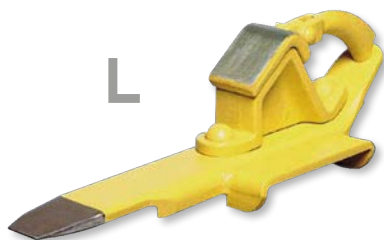


Plastic Wheelbarrow

● Part no. 96908245

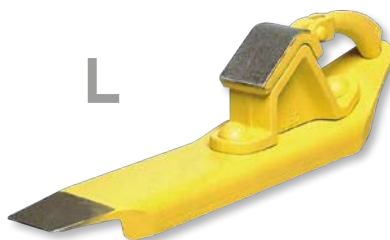
Plastic Wheelbarrow Advantages

- Puncture proof tyre
- No metal core parts – safe option where conductivity may be an issue
- Commonly used on or around 3rd rail / conductor rail working environments
- Also used for the application of cable laying
- Re-reinforced handles and extra strong tipping bar located in front of the wheel
- Designed for the outside, robust and rust-free
- One piece mould construction resulting in fewer stress points



For grooved and moulded rails

- Part no. 97400 (Left model)
- Part no. 97401 (Right model)



For use in switch areas

- Part no. 974100 (Left model)
- Part no. 97410 (Right model)



Rail Skid Rack

- fits 5–6 Rail Skids
- Part no. 9741124

Wagon Pinch Crank Lever

Operate standing outside the track



Used for pushing wagons

- Part no. 9741150

Spark Proof Wheel Wedge

Polyurethane – Miracle material



Able to compress to half its thickness and spring back to its original shape. Just pull over the car without derailing.

- Part no. 974260



Scan to see the complete assortment



Wheel Chock

LiBo 134



Wheel chock LiBo134 secures resting wagons against unintended movement.

- Part no. 9741144 (ø630–760 mm)
- Part no. 9741145 (ø810–1000 mm)

Spark Proof Wheel Chock

Polyurethane – Miracle material



Able to compress to half its thickness and spring back to its original shape. Just pull over the car without derailing.

- Part no. 974200 (ø660–1210 mm)

Crimping Tool RHX 185 (T2600)

Mechanical

RHX185 is a hand driven, mechanical Crimp Tool for cable lugs and C-sleeves. Delivered in a durable plastic case. Fits with NH-die sets.

The tool can crimp:

- KRF 10–120 mm²
- KRT 10–150 mm²
- KRD 10–150 mm²
- 10–50 mm² C-sleeves

- Part no. 7520N



Scan to see our press dies



Specifications

Weight	2,3 kg
Locking device	Yes
Cycle time	10 s

Crimping Tool HYCP 240

Hydraulic

HYCP 240 is a light weight, hydraulic driven Crimp Tool for cable lugs and c-sleeves. The head is rotatable 180°. Delivered in a durable plastic case. Built-in bypass relief valve. Small handle spread for close quarter applications. Fits with NH-die sets.

The tool can crimp:

- KRF 10–150 mm²
- KRT 10–240 mm²
- KRD 10–240 mm²
- C4–C9

- Part no. 75270150



Scan to see our press dies



Specifications

Weight	2,4 kg
Max Pressure	550 bar
Max Output	52 kN

Crimping Tool NMBT 240

Battery driven

NMBT 240 is a Battery Driven Crimp tool for cable lugs and c-sleeves. The tool is equipped with battery indicator and the head is rotatable 180°. Comes with a battery and a battery charger in a durable plastic case. Fits with NH-die sets.

The tool can crimp:

- KRF 10–120 mm²
- KRT 10–240 mm²
- KRD 10–240 mm²
- C4–C9

- Part no. 75270275



Scan to see our press dies



Specifications

Weight	2,8 kg
Battery	2,0 Ah Li-Ion
Max Pressure	18 VDC
Max Output	550 bar
	52 kN

Ecoblast

Rechargeable air horn

Make sure to use smart signalling products to keep your staff safe. Thanks to its strong enclosure of metal, the Ecoblast can be pumped up to 150 psi which makes it possible to create a blast of 120dB. The Ecoblast is not only loud but also a cost effective signalling solution. No need for replacement cartridges or chemical signal devices destined for quick landfill. Perfect for various industries, train warnings and to all sporting events. Recharge with air compressor or the included bike pump.

- About 20 blasts (1 sek) per charge
- Loud – 120 dB
- Cost effective – refill with air
- Safe – No chemicals or gas



Ecoblast

● Part no. 97060
(pump 97048 included)

Ecoblast Pro

Rechargeable air horn XL

No matter the industry, maintaining a safe work environment is always your first priority. With its large capacity and all-weather utility, Ecoblast PRO rechargeable air horn has the presence your crews need to be alerted to daily work hazards. The Ecoblast Pro is not only loud but also the most cost effective signalling solution for your work environment. No need for replacement cartridges or chemical signal devices destined for quick landfill. Recharge with air compressor or a larger hand pump.

- About 40 blasts (1 sek) per charge
- Loud – 115 dB
- Cost effective – refill with air
- Safe – No chemicals or gas



Ecoblast Pro

● Part no. 97050001
(no pump included)

LED Signalling light W/R/G

With sliding filters

Signalling light with a default white light and red and green sliding filters. The ON/OFF button can both be pressed for instantaneous light (morse) and slide for a permanent light. On the backside, it has a comfortable pedestal for laying it on plane surfaces and a strap that allows a firm grip during use and the possibility to attach on a belt. The reduced dimensions and weight make it easy to transport and fits in the operators pocket. Batteries are easily replaced by opening the chassi on the upper side with a button.

- Morse function on the ON/OFF-button
- Battery type – 1pcs of 3R12 (not included)
- Runtime – 60 h
- Weight – 140 g
- Dimensions – 124x70x43 mm

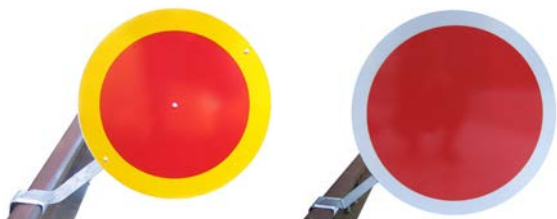


Led Signal Light

● Part no. 98365120

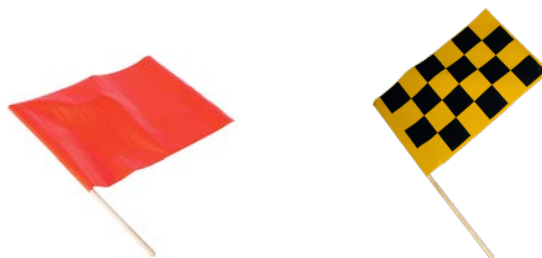
Railway Stop Sign

Warning sign for track work



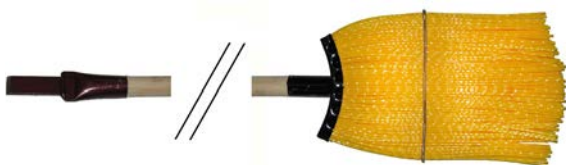
Signal Flags

Warning flags for track work



Track Switch Brooms

High quality brooms for snow fighting and cleaning in switch points etc.



TYPE 2E Heavy Duty Extra

Extremely rugged design. Length of the bristle material is 310 mm. Three rows of the extra thick bristle material. Metal reinforced together. 1.5 m long wood handle, 28 mm in diameter. Chisel in the top of the handle.

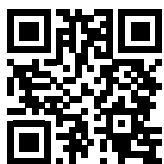
- Part no. SAFE 96802E



TYPE 5 Heavy Duty Standard

Extremely rugged design. Length of the bristle material is 210 mm. Thick bristle material. 1.5 m long wood handle, 28 mm in diameter. Chisel in the top of the handle.

- Part no. SAFE 96805



Scan for more
Safety Equipment and materials

Heaty – Rail Heater

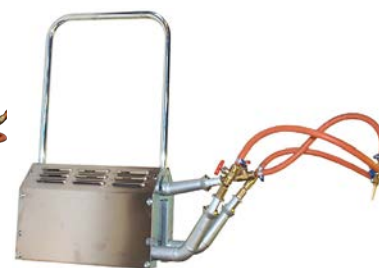
Heaty is an oven for even and precise preheating of rails before welding. Heaty can also be used for the gradual cooling of welds to prevent brittle fracture.

- No need for blowtorch
- Even heat distribution
- Exact and even holding heat
- Only propane necessary
- Easy to handle
- Fast heating
- Adjustable heaters



Heaty 600, L=600mm

● Part no. 4048



Heaty 300, L=300mm

● Part no. 4045

Propane Cylinder Heater

Used for welding during cold weather.

- Improved weld quality
- Larger gas outlet from the bottle
- Lower gas cost
- Fewer bottles to carry out the work
- Well-developed and proven model! Used by railway companies in tough environment since 2006



17–45 kg 1500W

● Part no. 4052b

11–22 kg 1000W

● Part no. 40532b

5–11 kg 500W

● Part no. 40535



Waterproof
12 litre Dry Tube
for storage included.

● Part no. 407012Y

Thermal Imaging Camera

The IC125 LV has an extremely wide temperature range of $-20\text{ }^{\circ}\text{C}$ to $+1,500\text{ }^{\circ}\text{C}$ and provides a high-performance 384×288 infrared sensor with 110,592 temperature measuring points.

In addition, the IC125 LV distinguishes itself with an extremely high geometric resolution of 1.1 mrad and a thermal sensitivity of $0.05\text{ }^{\circ}\text{C}$ guarantee precise thermograms in real time for any measurement situation.



IC125 LV Thermal Camera

● Part no. 97306096

Rail Thermometers



Infrared Thermometer

● Part no. 97305025



Digital Thermometer

● Part no. 97303015



Digital Thermometer

● Part no. 97304



Analog Thermometer

● Part no. 97306
Magnetic



Welders Seat

Increased safety for the welder during rail welding.

- Part no. RW10171 Standard model
- Part no. RW1017450 Incl. chest plate & locking device
- Part no. RW101695 All inclusive model. Chest plate, locking device, heating element and fan.

Contact us for other model configurations.

Power Supply Unit

To connect heating element & fan.
Transforms 90–264 VAC to 12 VDC
5m cord included.

- Part no. RW10180



Welding Screen

- Reinforced Heavy-duty PVC fabric
- Flame retardant
- Approved for track welding
- Fibreglass tubing – Non Conductive
- Part no. 57330 (1,5x1,2 m) – 9 kg
- Part no. 57331 (0,9x0,75 m) – 7 kg



Included carrying bag



Track Welding Tent

- 2,5x2,5x2 m
- Translucent reinforced cover
- Flame retardant
- Approved for track welding
- Suitable down to -10°C
- Weight 24 kg
- Part no. 57250



Arc Welding Tent

- 2,5x2,5x2 m
- Extra spark and arc protected blue sides with translucent roof
- Flame retardant
- Suitable down to -10°C
- Weight 25 kg
- Part no. 57255



PVC Rail Track Screen

- Standard 4 screens, speed tent design
- Size 7.2 x 2.0m – supplied in two sections of 3.6 x 2m
- Heavy duty carry bag included
- Additional screening section available, as a double section of 3.6 x 2m
- Part no. 57320



Cable Joint Tent

One zip in front and back.
White cover is suitable to -30°C.
Translucent cover is suitable to -10°C.

White cover

- | | | |
|---------------|-------|-------------------|
| 1,8x1,7x1,65m | 9 kg | • Part no. 57132P |
| 1,8x1,8x2m | 14 kg | • Part no. 57162P |
| 2,1x2,1x2m | 15 kg | • Part no. 57191P |
| 2,5x2x1,9m | 19 kg | • Part no. 57137P |
| 2,5x2,5x2m | 19 kg | • Part no. 57247P |

Your Logo

We can have your logo custom printed on most of our tents.

Triangular

Triangular

Triangular

Triangular



Work Umbrella ø2,4m

- Translucent
- ø2,4m, 4,4 kg
- Non-conductive
- Flame retardant
- Mold resistant
- Part no. 57120



Work Umbrella ø2m

- PVC
- ø2m, 5 kg
- Non-conductive
- Flame retardant
- Incl. carry bag
- Part no. 57123



Accessories



Rail Bracket for Umbrella

- Part no. 57122A (ø45mm)
- Part no. 57122B (ø35mm)



Sand Bag, empty

- For app. 25 kg
- Part no. 5735825



Carry Bags for Tents/Umbrellas

- Contact us and specify your Tent/Umbrella

Safety Barrier Fastenings

Fast way to increase safety on the track



Fastenings for easy mounting of safety barrier that efficiently and easily prevents unauthorized access to the tracks.

- Best solution to mount a safety barrier for the railway
 - Withstands 200 km/h
 - Fast and secure fitting on all existing rails
- Part no. 96720 2200 mm for 50 kg rail (rail foot 133 mm)
 - Part no. 96721 2200 mm for UIC60 rail (rail foot 150 mm)

Screen for Safety Barrier

The safety net can be used as a barrier for block & delimitation of areas, both on construction sites, roofing, railway, and at public places such as sporting events.

- Weight: 12 kg, Length: 50 m, Height: 1 m
 - UV-resistant plastic
 - Mesh size approx 80x40 mm
- Part no. 9670400



Rapid Roll

Portable Safety Zone

Rapid Roll is the revolutionary tool that allows you to easily set up, take down, protect and re-use your barrier fencing material. Say goodbye to frustrating piles of wasted fencing and time-consuming setup and takedown and say hello to saving time, effort and money.

Should be standard procedure to use when loading with fork lifts, accidents, road and rail work etc.

- Part no. 96707000 (15 m 3-legged w. 4 posts & weights)
- Part no. 96707050 (15 m wheel-base w. 4 posts & weights)
- Part no. 96707200 (30 m wheel-base w. 4 posts & weights)





Rail Scooter

- 3 times faster than walking – with no impact on the environment
- Portable – less than 12 kg
- Tool-less assembly (separate into 3 parts)
- Insulated rail wheels

No walking in the gravel or between the sleepers! Distance meter displays the precise position. Particularly suitable for inspections and field work where you cannot reach by car. New design with parking brake.

Track gauge 1435 mm

- Part no. 96252 Incl. distance meter & basket
- Part no. 96252b Excl. distance meter & basket

Track gauge 1520–1524 mm

- Part no. 96262 Incl. distance meter & basket
- Part no. 96262b Excl. distance meter & basket



Load Scooter

- Weight: 30 kg. Fits easily in any car. Easy to lift off the rail
- Total load: 225 kg (including operator)
- Loading area 0,8 m²
- Raised for passing points and road crossing
- Tool-less assembly (separate into 3 parts)
- Insulated rail wheels

Particularly suitable for inspections and field work where you cannot reach by car. New and improved design!

Track gauge 1435 mm

- Part no. 9620LS

Track gauge 1520–1524 mm

- Part no. 96206LS



Mini Trolley

- Weight 19,5 kg. Fits easily in any car. Easy to lift off the rail.
- Total load 350 kg
- Load platform 915 x 666 mm
- Raised for passing points and road crossing
- Tool-less assembly (separate into 3 parts)
- Insulated rail wheels

Our Mini Trolley allows for a total load of 350 kg. Particularly suitable for inspections and field work where you cannot reach by car. Exclusive design with parking brake.

Track gauge 1435 – 1524 mm (adjustable)

- Part no. 966410



Load Trolley

- Load platform 1625 x 800 mm
- Free pass 72 mm
- Insulated, easy-rolling Teflon wheels
- Incl. Towing handle, parking lever and parking brake
- Weight & load capacity: See product list below

Track gauge 1435 – 1524 mm (adjustable)

- Part no. 9665050 (500 kg load capacity). Weight 37 kg
- Part no. 9665060 (700 kg load capacity). Weight 39 kg
- Part no. 9665070 (1000 kg load capacity). Weight 48 kg
- Part no. 9665080 (1500 kg load capacity). Weight 55 kg

Rescue / Accident site Bag

Complete kit

A bag with equipment for work place accidents. The backpack is waterproof in orange Hi-Vis material with highly reflective properties for maximum visibility. Rescue bags of this kind should exist on all work places such as railways, construction sites, consulting etc.

Content:

- 1 x Hi-Vis waterproof backpack
- 1 x First Aid bag (Cederroth Large, incl. rescue blanket)
- 1 x Signal horn
- 1 x Warning vest
- 1 x Checklist, double-sided
- 500m Barrier belt
- 2 x Pulsar warning lights
- 2 x Marker pens
- 1 x Emergency hammer for glass with belt knife



Rescue Bag Kit

● Part no. 40690010

Waterproof First Aid Bag

Complete with treatments

Thanks to fully welded seams and our trusty Fold Seal System™, this 100% waterproof first aid bag is suitable for quick submersion and even floats if dropped in water. The bag (tough nylon coated PVC) includes over 30+ treatments for injuries typically sustained from water sports, as well as general outdoor or water-based activities.

A fully adjustable shoulder strap and rear belt loop attachment systems on the waterproof first aid kit bag means you can carry this bag hands free, allowing you to launch your craft or explore the great outdoors.

All first aid dry sack treatments are manufactured to European quality standards and carry the CE mark.

General

- 1 x Essential care card
- 1 x Safety pin set (6 pcs)
- 1 x Metal scissors
- 1 x Tweezers
- 1 x PVC gloves (2 pair)
- 1 x Resuscitation aid with pocket chain pouch

Dressings

- 6 x Alcohol prep pad
- 2 x Non-adherent dressing pad
- 1 x Burn treatment gel

Tapes and Bandages

- 1 x First Aid pouch with assorted plaster pack
- 1 x PBT bandage (L)
- 1 x Crepe bandage (1.25 x 5m)
- 2 x Sterile gauze pads (8-ply)
- 1 x Micropore tape
- 2 x Wound closure strips
- 2 x Sterile blister plasters
- 1 x Triangular bandage



Waterproof First Aid Bag

● Part no. 40690040

Safety LED Vest – Nova Rail

Hi-Vis LED Harness

Working in vulnerable environments where you must be visible?

Novas notice-class materials & LED lighting highly improves visibility in all directions, even in non-direct lighting conditions. In addition to the yellow lighting, there is white lighting in front for visibility which also doubles as a work light - without shadows! The dimmable white light together with the lights on the shoulders and backs are easily controlled with two function buttons. Nova is run by a regular Power Bank placed in back pocket. On the chest there is a large pocket that protects your accessories even in wet conditions.

Use Nova with existing clothing to avoid losing your alert class!

Light configurations

- Forward: White work light (dimnable)
- Backward: Orange (fixed beam)
- Shoulders: Orange (flashing in several configurations)



Nova Rail Safety Vest

- Part no. 98516260
- (Power bank 8000mA included)

Knee Protection

The FENTO 400 Pro supports and protects both the knee and the whole lower leg when kneeling. Pressure distribution prevents knee and back complaints. 100% Comfort, inlay is replaceable and breathable. The inside is breathable, durable and very hard-wearing and recommended by Health and Safety professionals, and physiotherapists.

- 100% comfort
- Co-designed by the medical specialists
- Soaker Pad is replaceable and breathable
- Prevents knee and back pain by spreading the pressure
- The elastic band does not constrict the back of the knee



Fento 400 Pro

- Part no. 83021510

Walkstool

Walkstool saves your back, knees and joints and is recommended by physiotherapists. A stool that easily fits in your bag. Folds up with simple moves. Pull the legs and fold out. Comfortable to sit on. Telescopic legs, aluminum, and seat cushion made of high tech materials. The chair is patented.

If you want a more lavish version with large rubber feet, etc., we recommend comfort model.



Basic 50 cm / 20"

- Part no. 56555
- Max load 150 kg



Comfort 55 cm / 22"

- Part no. 56565
- Max load 225 kg

Face Shield 6X3

Equipped with a panoramic lens, 6X3 offers excellent peripheral vision and it can be used comfortably with any corrective eyewear. The design of the face support ensures a proper seating for respiratory masks and half masks, and the facial protection provides additional defense to the operator's face.

- Panoramic lens can be perfectly worn over prescription glasses
- Exclusive UDC coating
- Facial support compatible with half masks
- Certified protection against drops and splashes
- Impact resistance at 432 km/h, even at extreme temperatures



Face Shield 6X3

● Part no. 8043563
(parts can be bought separately)



Don't miss out on campaigns, news and product displays!

Visit www.safetrack.se & sign up for our newsletter





Safetrack Baavhammar AB
Möllebergavägen 339-24
245 93 Staffanstorp, Sweden

Tel: +46 (0)40 44 53 00
email: sales@safetrack.se
web: www.safetrack.se

